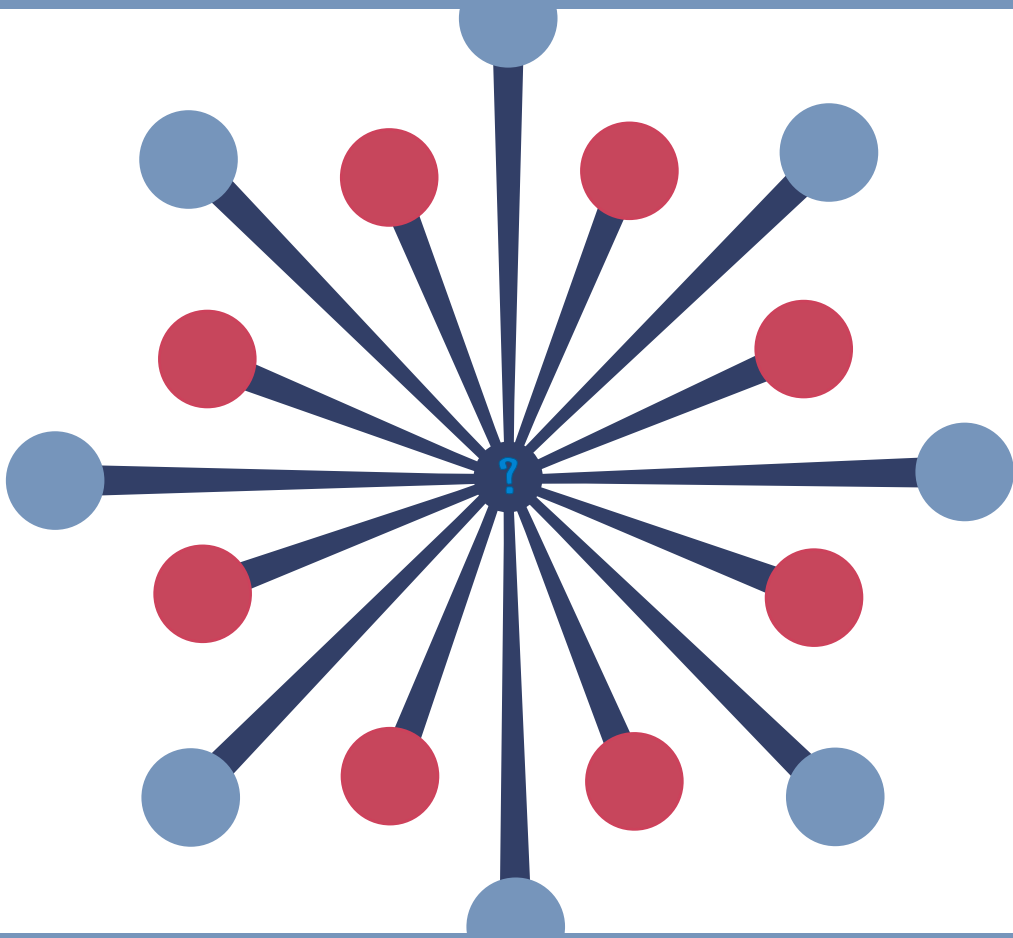


# CAPTURE THE HEART & FORM CONCLUSIONS



What's at the core or  
the center of this?

# BUILD EXPLANATIONS



What is really  
going on here?

# UNCOVERING COMPLEXITY



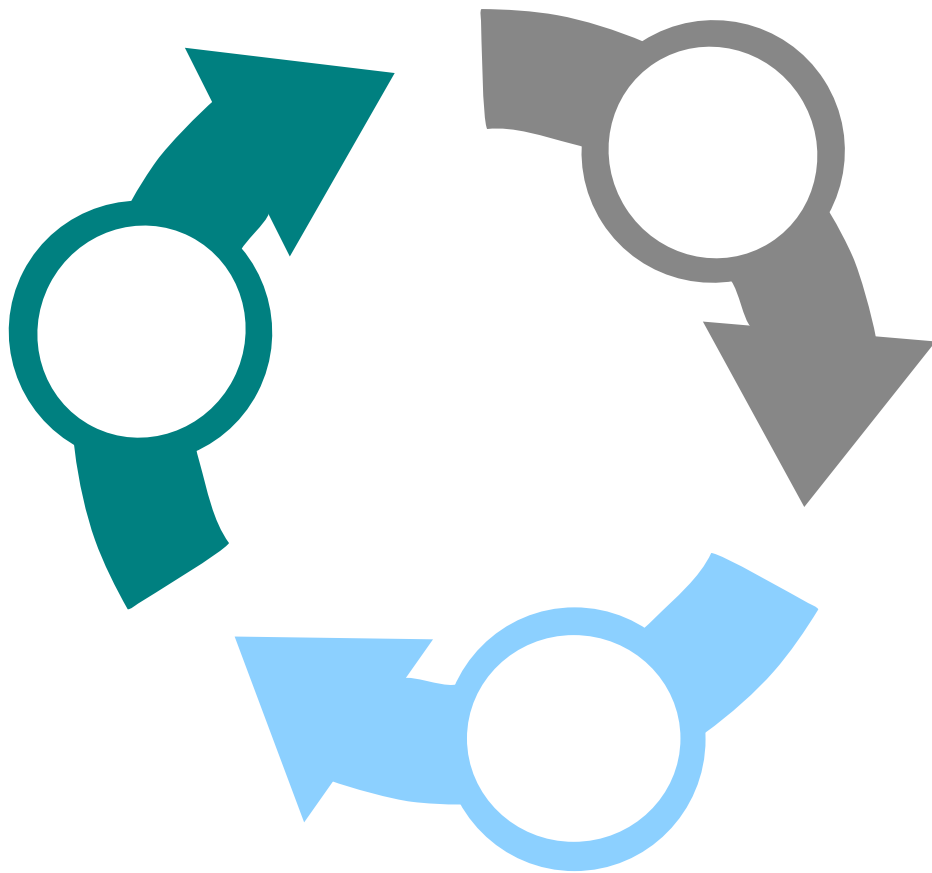
What lies beneath  
the surface of this?

# DESCRIBE WHAT'S THERE



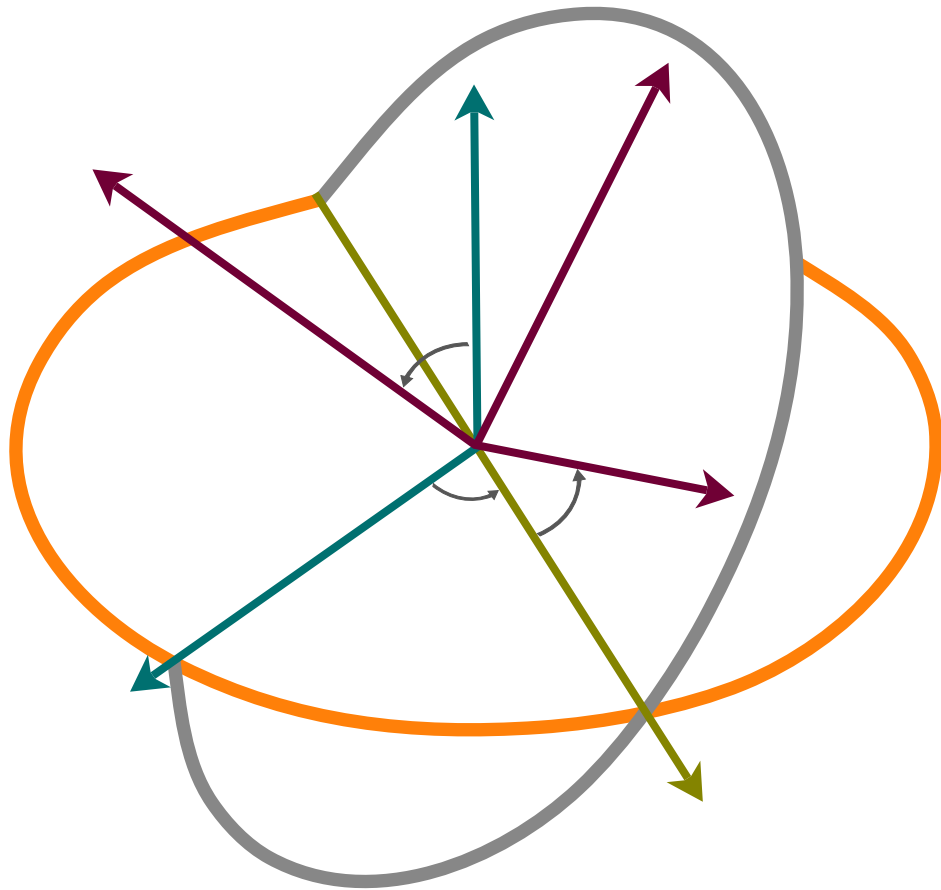
What do you see  
and notice?

# MAKING CONNECTIONS



**How does this fit with  
what you already know?**

# CONSIDER DIFFERENT VIEWPOINTS



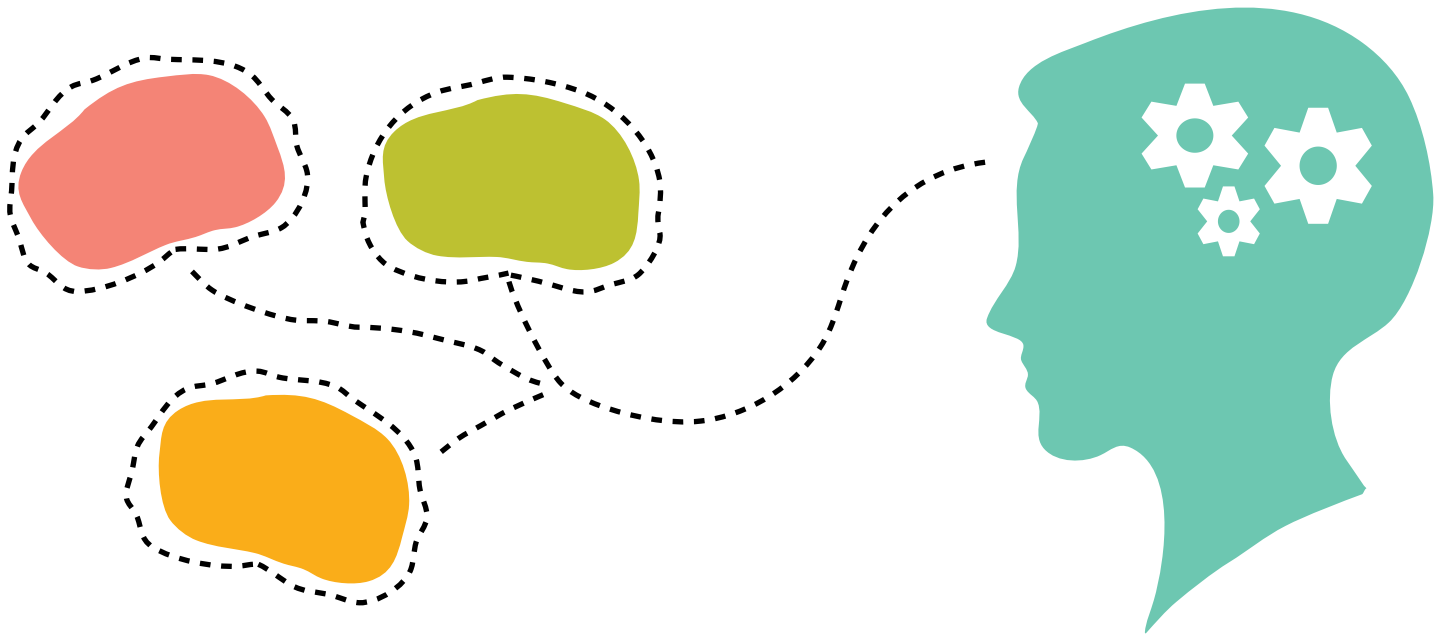
What's another angle  
on this?

# REASON WITH EVIDENCE



Why do you think so?

# WONDERING



**What are you  
curious about here?**